

# AVIATION FUEL RECOVERY UNITS

## WITH DEFUELER OPTION AVAILABLE

**Conserves fuel / Decreases filtration cost / Reduces environmental impact**



USED TO RECOVER  
AVIATION FUEL

The **Schultz Model SC-9000** aviation fuel recovery unit is a proven design. Our aviation fuel recovery units are in use at many commercial and military fueling installations worldwide.

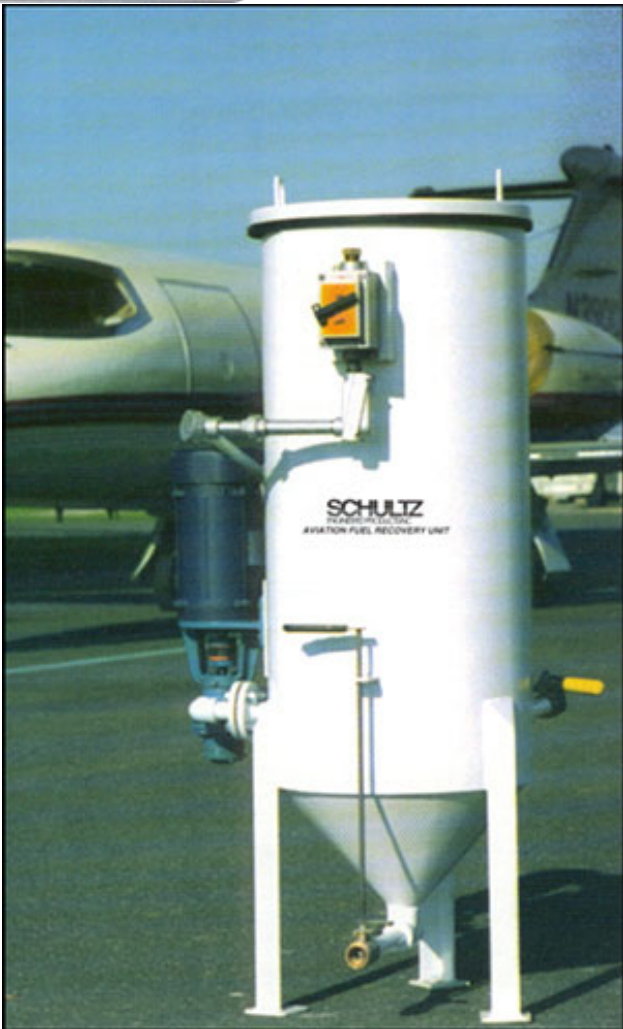
The **Schultz Model SC-9000** provides an economical means of fuel recovery from fuel that would otherwise be considered waste fuel. Contaminated fuel can be

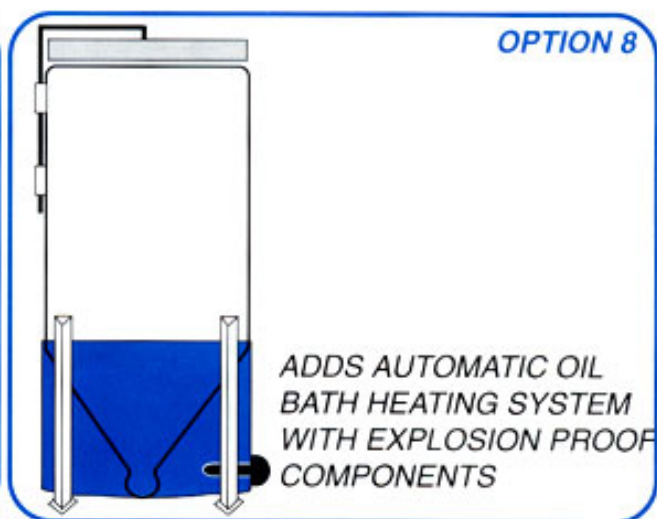
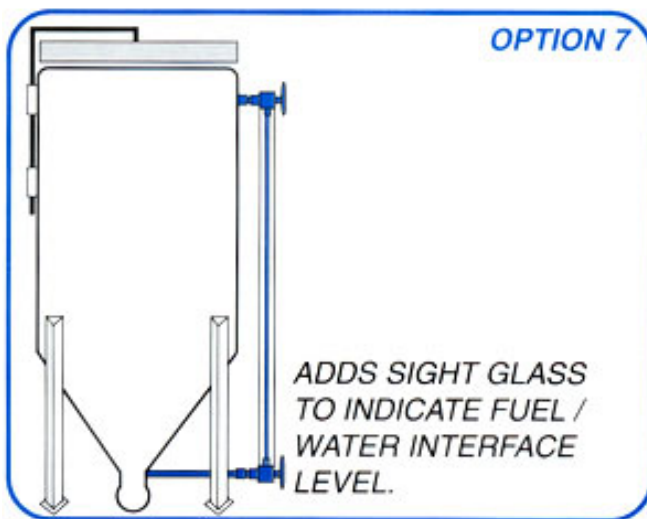
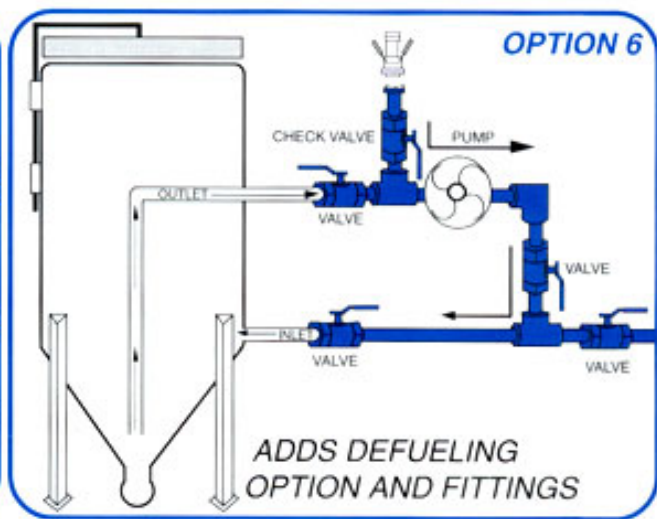
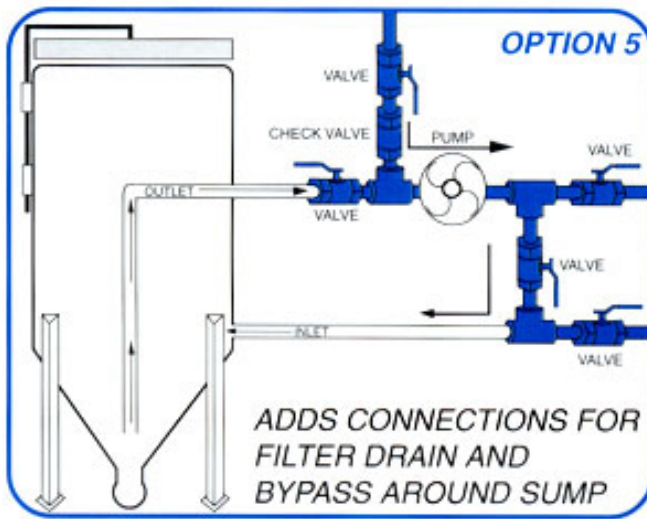
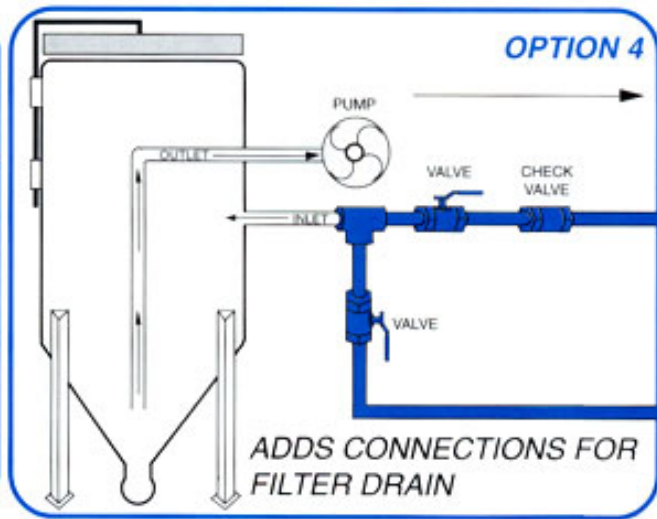
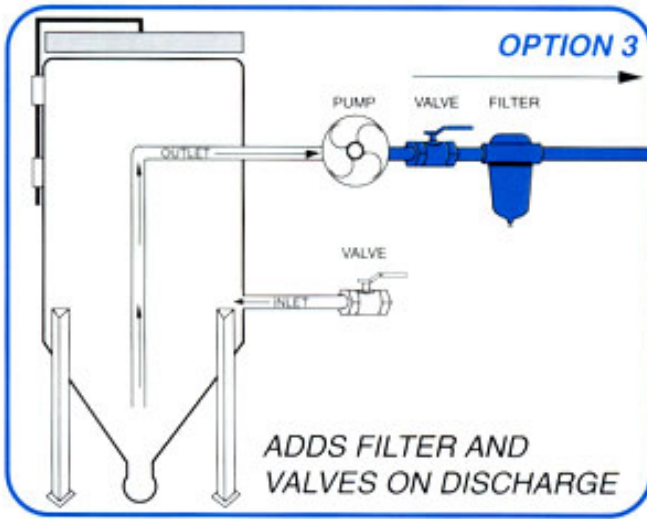
pumped, or drained into the separator. Water and sediment are eliminated, allowing decontaminated fuel to be pumped back to usable storage for resale. The Schultz Model SC-9000 with defueling option may be used to de-fuel aircraft, either into recovery unit or directly back to storage. This is an *original design* by Schultz Engineered products, Inc.

The Schultz Model SC-9000 utilizes a positive displacement pump with a stainless steel inverted suction. Other aviation fuel recovery units currently available utilize a centrifugal pump which requires a flooded suction, along with a foot-valve or isolation valve. In other units, if the valve is inadvertently left open, the pump may become contaminated with water and sediment allowing to be discharged back to storage. In colder climates, water could freeze inside the pump with an inverted suction, the **Schultz Model SC-9000** eliminates the need for valves or mechanisms inside the tank. This assures optimal performance and reduced internal maintenance.

### Standard Features:

- Epoxy Coated Internally to MIL-C-4556.
- 11 Gauge Carbon Steel Construction.
- Positive Displacement, Ductile Iron Pump, 3/4 HP, 10 GPM @ 50 TDH.
- Explosion Proof Motor and Components, NEC Compliant to Class 1, Division 1, Group D Specs
- Deadman Valves, Spring Closing on Inlets and Water Draw Off Connections.

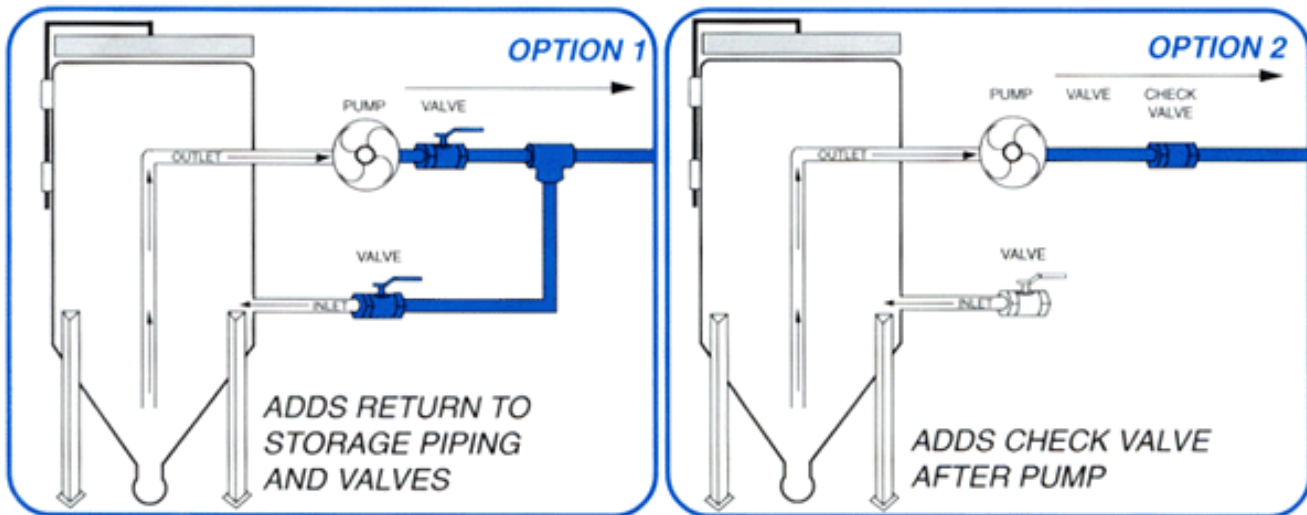




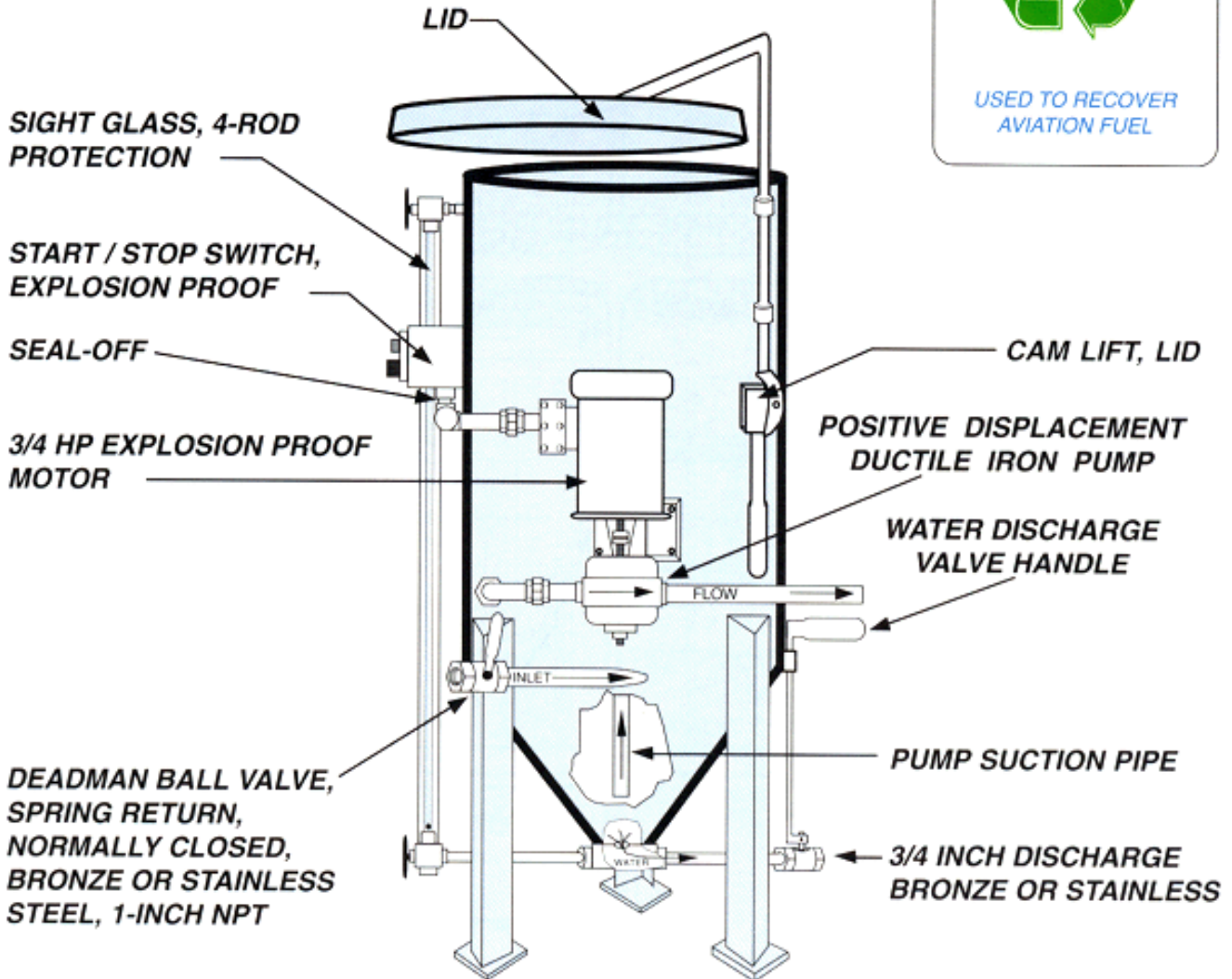
Options and Part Number Designation Are Provided Below. Add As Many Options As Needed. Automatic Units are available, as well as, Pneumatically Powered Units.

**SC-9000-050-CS-SW-1CS-2CS-3CS**

CAPACITY	CONSTRUCTION	FITTINGS	OPTION SELECTIONS
050 = 50 US Gal. 100 = 100 US Gal. 200 = 200 US Gal. 300 = 300 US Gal.	CS = 11 Gauge Carbon Steel Housing, internally coated with MIL-C-4556.  SS = 11 Gauge Stainless Steel Housing	SW = Socket Welded  TH = Threaded Fittings	0 XX = Basic unit, w/ Pump, Switch, & Lid. 1 XX = Adds Return to Storage Pipe & Valves. 2 XX = Adds Check Valve After Pump. 3 XX = Adds 2 Micron Filters To Discharge Line. 4 XX = Adds Connection for Filter Drains. 5 XX = Adds Connection for Drain and By-Pass. 6 XX = Adds Defuel Option Fittings. 7 XX = Adds Sight Glass to Fuel Recovery Unit. 8 XX = Adds Automatic Oil Bath Heating System. 9 XX = Adds Polyurethane Exterior Paint. <small>Insert "CS" for Carbon Steel Valves. Insert "SS" for Stainless Steel Valves.</small>



# AVIATION FUEL RECOVERY UNIT



## FOR THE FUEL FARM